

## Using the MovieCD Remote Control (Version 4.03)



The Motion Pixels MovieCD Player automatically loads this configuration on the Windows desktop. The following is a description of the virtual remote control and its related functions. Please note that specific Remote Control functions, such as rewind, fast-forward, slow-motion, and frame advance only work with the windowed video. Most functions have related hotkeys. Please consult the Hotkey Section of this documentation for more information about hotkey functions.



**Play (CTRL+P)** - Plays the windowed video forward at normal speed.



**Stop (ESC)** - Halts current windowed video playback. A single video frame will appear in the window.



**Rewind (CTRL+<--)** - Plays the windowed video backwards. Video rewind speed and audio mute can be selected via the Options menu.



**Fast Forward (CTRL+-->)** - Plays the windowed video forward as fast as possible without skipping frames. Video fast-forward speed can be accessed through the Options menu. Audio mute is also available.



**Minus One Frame (<--)** - This button reverses the still video image one frame at a time.



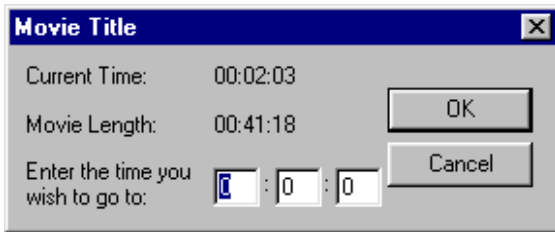
**Plus One Frame (-->)** - Advances the still video image one frame at a time.



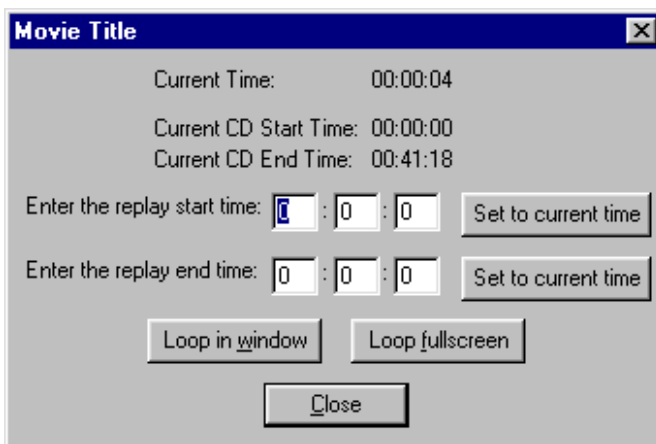
**Slow Motion (CTRL+S)** - Plays the video forward at 1/4 normal speed. Audio can be disabled from the Options menu.



**Go To (CTRL+G)** - The Go To function allows the user to type in a time in hours, minutes and seconds up to the total length of the movie. The video will advance to the chosen time. Click on "Ok" to continue.



**Replay (CTRL+R)** - This option features an automatic looping function with user-definable start and end points. Works with either the windowed or fullscreen video modes.



**Options** - The Options menu contains several different options for video playback. Click any of the check boxes to select the desired option.



The **Rewind/Fast Forward Speed** can be adjusted to play as fast as possible without skipping frames. The other speed options are ratios of normal playback speed.

Check the **Mute Audio During REW/FF** to silence the audio during fast-forward or rewind. Also, check the Mute audio to silence the audio during slow-motion. Audio mute is automatically

enabled when "As Fast As Possible Without Skipping Frames" is selected.

**Replay (loop) Video** constantly loops the current video from beginning to end. Enabled by default.

**Always On Top (when windowed)** keeps the video window overlaid on top of other open applications, such as Notepad or Calculator.

**Boost Priority** allocates most of the system resources to video playback when other applications are open. Please note that the Remote Control may not immediately respond to user input with this option enabled.



**Power (ALT+F4)** - This closes the video window and the remote control application.



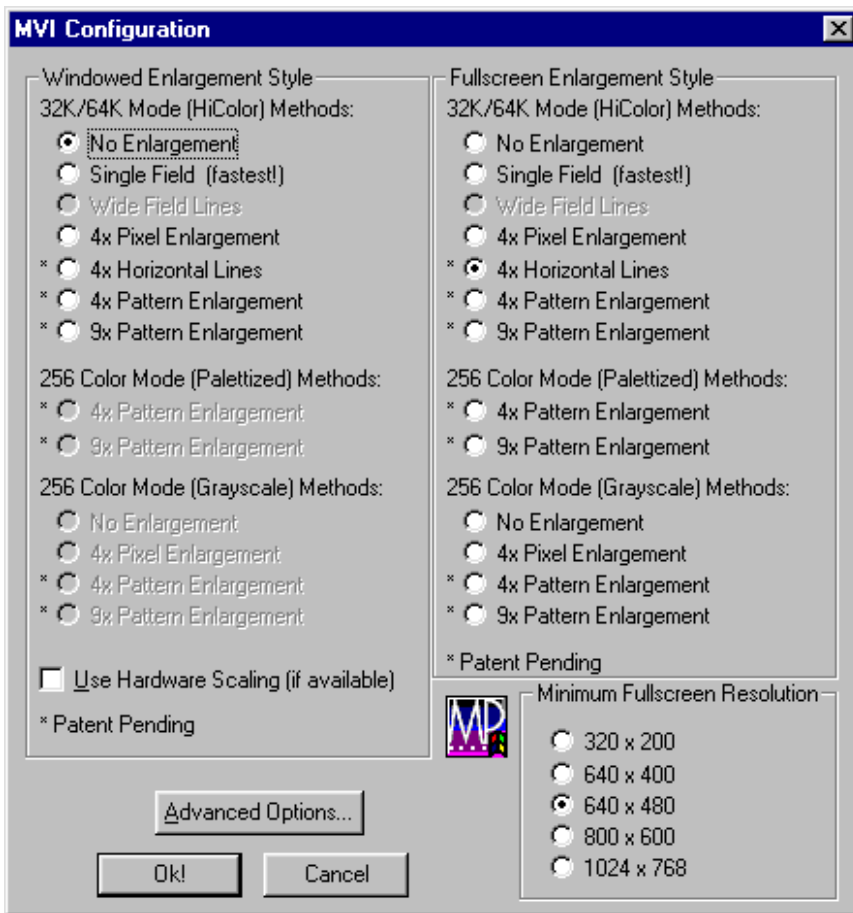
**Min/Max (CTRL+M)** - Displays the video window and the remote control on top of the existing Windows desktop. Clicking this button will toggle between this mode and hiding the desktop. Only the video window and remote are visible.



**Full Screen (CTRL+F)** - Plays the video full screen according to the specified Fullscreen Enlargement style selected. See the Playback Style dialog box for more information.



**Playback Style (CTRL+L)** - Motion Pixels offers up to 13 different resizing options for video playback in a window or full screen. 5 screen resolutions are also available as well as video chipset detection. Please consult the "Using Aware" documentation for more information about Motion Pixels resizing techniques.



## Other Functions

**Hide Remote Control (CTRL+H)** - Right-click while the mouse cursor is over the Remote Control. To restore the Remote Control, right-click on the video window.

**Minimize All Applications (SPACEBAR)** - Pressing the SPACEBAR while the video window is active will reduce the Remote Control and Video Window to icons. Video playback will halt. To restore, double-click with left mouse button on the minimized video icon.

**Mute Audio (/ or SHIFT+?)** - Press the forward slash (/) to mute the audio during playback. Hold down the SHIFT key and press the forward slash (/) to enable the audio once again.

**Hardware Scaling** - Enabling this option allows the video window to be "stretched" or reduced to any size on the windows desktop. To restore the original video window size, uncheck the Use Hardware Scaling option.

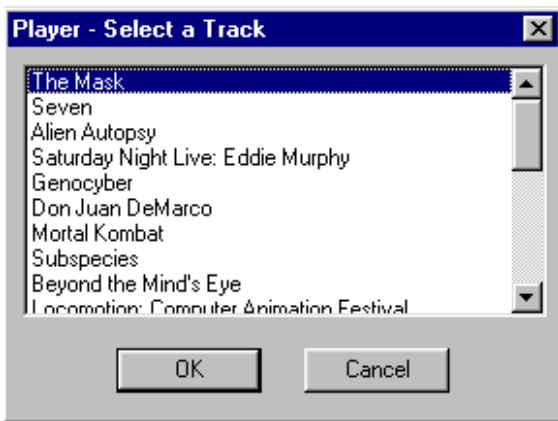
**Progress Bar** - The gray bar above the Play and Stop buttons on the Remote Control changes to a red indicator as the video time advances. This indicates the total length of the video files, even if they span more than one CD-ROM.

**LED Display** - The abbreviated video title is displayed as well as the current time in hours, minutes, and seconds and track markers.

The Remote Control may display a sequence of track numbers. Clicking on any of these will advance the video to a pre-programmed track segment. The Hours:Minutes:Seconds display will also change. This function operates if the windowed video is playing or not.



**Jump To Track (CTRL+K)** - Hold down CTRL+ K to bring up the Track Selection dialog box. Select the desired Track Name, then click "OK", the video will advance to the marked track selection



**Previous Track (CTRL+PgUp)** - Regresses to the video segment prior to the currently marked track number.

**Next Track (CTRL+PgDn)** - Advances to the next video segment in front of the currently marked track number.

## **Hotkeys and Related Functions**

<b><u>HOTKEY</u></b>	<b><u>FUNCTION</u></b>
[	Brightness Decrease
]	Brightness Increase
\	Brightness Reset
{	Gamma Decrease
}	Gamma Increase
	Gamma Reset
/	Mute Audio
?	Unmute Audio
<	Volume Decrease
>	Volume Increase
<-- (LEFT ARROW)	Minus One Frame
--> (RIGHT ARROW)	Advance One Frame
ALT+C	Control Menu
ALT+E	Effects Menu
ALT+F	File Menu
ALT+F4	Exit Program
ALT+H	Help Menu
CTRL+<-- (LEFT ARROW)	Rewind
CTRL+--> (RIGHT ARROW)	Fast Forward
CTRL+1	No Fullscreen Enlargement
CTRL+2	4X Enlargement Styles
CTRL+3	9X Enlargement Styles
CTRL+F	Play Fullscreen
CTRL+G	GoTo
CTRL+H	Hide/Show Remote Control
CTRL+I	Show Video List (if available)
CTRL+K	Jump To Track (if available)
CTRL+L	Playback Style
CTRL+M	Minimize/Maximize
CTRL+O	Open Video
CTRL+P	Play In Window
CTRL+R	Replay
CTRL+S	Slow-Motion
CTRL+T	Player Options
CTRL+PgUp	Previous Track (if available)
CTRL+PgDn	Next Track (if available)

CTRL+END  
CTRL+HOME  
ESC  
PgUp  
PgDn  
SPACEBAR

Go To End  
Go To Beginning  
Stop  
Minus 1 Second  
Advance 1 Second  
Minimize All Applications